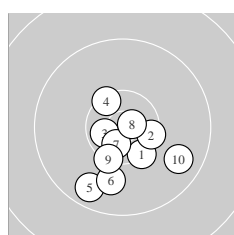
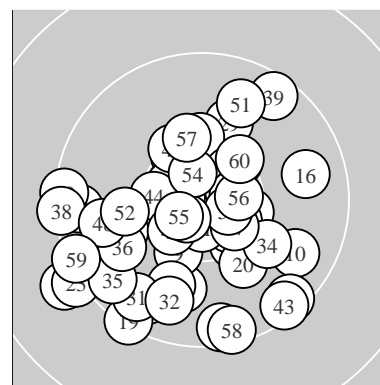
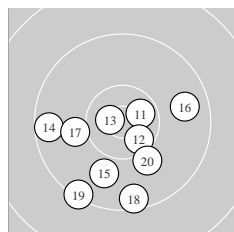


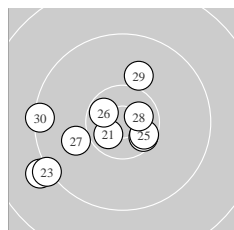
Ergebnis:	<b>577</b>	(604.5)				
Serien:	97	95	97	93	98	97
Zähler:	37	23	0	0	0	0
Innenzehner:	23					
weiteste:	15.17 (22.) , 14.12 (23.) , 13.22 (19.)					
beste Teiler	152.4 (8.) 200.0 (13.) 225.8 (53.)					
Trefferlage	1.20 mm links, 2.05 mm tief					
Streuwert	5.47, horizontal: 5.80, vertikal: 5.13					



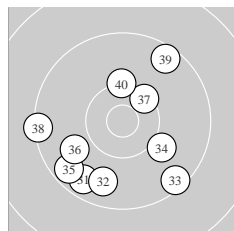
Serie 1:	10.3 ↘	10.4 *	10.6 *	10.4 ↖	9.6 ↙
	9.9 ↓	10.6 *	10.8 *	10.3 ↓	9.7 ↘
beste Teiler	152.4 (8.) 281.0 (7.) 295.3 (3.)				
Trefferlage	0.21 mm rechts, 3.19 mm tief				
Streuwert	4.11, horizontal: 4.17, vertikal: 4.04				



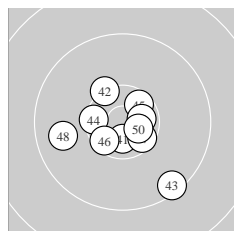
Serie 2:	10.6 *	10.5 *	10.7 *	9.5 ←	9.9 ↓
	9.7 →	10.0 ←	9.4 ↓	9.3 ↓	10.1 ↘
beste Teiler	200.0 (13.) 308.6 (11.) 370.6 (12.)				
Trefferlage	0.99 mm links, 3.80 mm tief				
Streuwert	5.80, horizontal: 6.35, vertikal: 5.19				



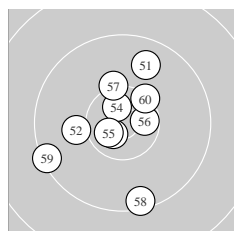
Serie 3:	10.6 *	9.1 ↙	9.2 ↙	10.5 *	10.5 *
	10.5 *	10.0 ←	10.6 *	10.0 ↑	9.3 ←
beste Teiler	267.2 (28.) 292.3 (21.) 328.2 (26.)				
Trefferlage	3.84 mm links, 1.45 mm tief				
Streuwert	5.80, horizontal: 6.87, vertikal: 4.48				



Serie 4:	9.6 ↙	9.7 ↓	9.4 ↘	10.0 ↘	9.6 ↙
	9.9 ↙	10.3 ↗	9.3 ←	9.5 ↗	10.2 ↑
beste Teiler	485.1 (37.) 589.2 (40.) 736.6 (34.)				
Trefferlage	1.39 mm links, 2.56 mm tief				
Streuwert	7.12, horizontal: 7.37, vertikal: 6.87				



Serie 5:	10.6 *	10.3 ↘	9.4 ↘	10.4 *	10.5 *
	10.4 *	10.5 *	9.8 ←	10.6 *	10.6 *
beste Teiler	261.0 (41.) 266.3 (50.) 300.1 (49.)				
Trefferlage	0.07 mm links, 1.26 mm tief				
Streuwert	4.42, horizontal: 4.86, vertikal: 3.94				



Serie 6:	9.7 ↑	10.0 ←	10.7 *	10.6 *	10.6 *
	10.5 *	10.2 ↑	9.4 ↓	9.3 ←	10.3 ↗
beste Teiler	225.8 (53.) 262.9 (55.) 265.0 (54.)				
Trefferlage	1.15 mm links, 0.04 mm tief				
Streuwert	5.55, horizontal: 5.09, vertikal: 5.97				

Meyton Elektronik