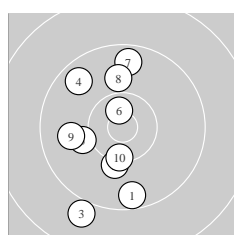
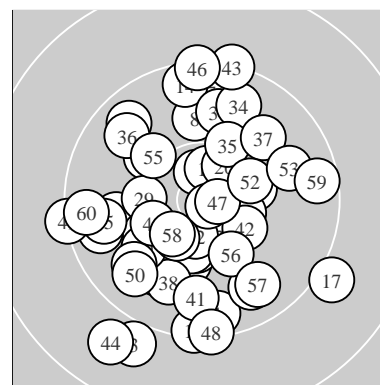
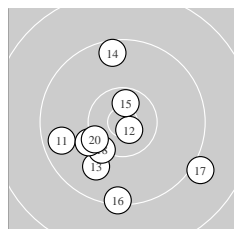


Ergebnis:	569	(597.0)
Serien:	94 95 99 95 91 95	
Zähler:	30 29 1 0 0 0 0 0 0	
Innenzehner:	12	
weiteste:	16.88 (44.) , 15.93 (3.) , 15.22 (17.)	
beste Teiler	84.8 (33.) 155.8 (47.) 169.5 (12.)	
Trefferlage	1.22 mm links, 1.34 mm tief	
Streuwert	6.15, horizontal: 5.48, vertikal: 6.75	



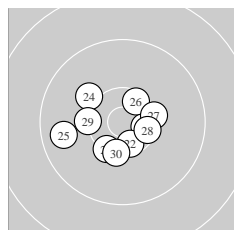
Serie 1:

9.5 ↓	10.1 ↓	9.0 ↙	9.6 ↘	10.1 ←
10.6 *	9.6 ↑	9.9 ↑	9.9 ←	10.3 ↓
beste Teiler	283.0 (6.)	506.7 (10.)	641.3 (2.)	
Trefferlage	2.99 mm links, 1.12 mm tief			
Streuwert	6.58, horizontal: 3.87, vertikal: 8.47			



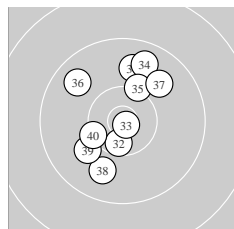
Serie 2:

9.6 ←	10.7 *	9.9 ↙	9.5 ↑	10.6 *
9.3 ↓	9.0 ↘	10.2 ↙	10.1 ←	10.3 ↙
beste Teiler	169.5 (12.)	319.9 (15.)	544.7 (20.)	
Trefferlage	1.62 mm links, 2.89 mm tief			
Streuwert	6.39, horizontal: 6.10, vertikal: 6.66			



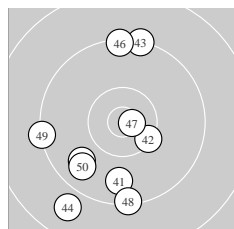
Serie 3:

10.5 *	10.5 *	10.3 ↙	10.1 ↘	9.7 ←
10.4 *	10.3 →	10.4 *	10.2 ←	10.3 ↓
beste Teiler	371.6 (21.)	382.0 (22.)	409.4 (26.)	
Trefferlage	0.83 mm links, 0.83 mm tief			
Streuwert	4.19, horizontal: 5.01, vertikal: 3.17			



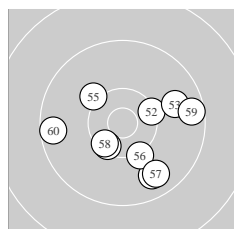
Serie 4:

9.8 ↑	10.5 *	10.8 *	9.7 ↑	10.2 ↑
9.7 ↘	9.9 ↗	9.8 ↓	10.0 ↙	10.3 ←
beste Teiler	84.8 (33.)	368.9 (32.)	542.5 (40.)	
Trefferlage	0.76 mm links, 1.68 mm hoch			
Streuwert	5.47, horizontal: 4.48, vertikal: 6.32			



Serie 5:

9.7 ↓	10.3 ↘	9.2 ↑	8.8 ↙	9.8 ↙
9.3 ↑	10.8 *	9.3 ↓	9.3 ←	9.7 ↙
beste Teiler	155.8 (47.)	512.0 (42.)	936.5 (45.)	
Trefferlage	2.74 mm links, 2.96 mm tief			
Streuwert	8.01, horizontal: 5.88, vertikal: 9.68			



Serie 6:

10.4 *	10.3 →	9.8 →	9.7 ↓	10.1 ↘
10.2 ↓	9.7 ↓	10.4 *	9.5 →	9.5 ←
beste Teiler	451.4 (58.)	457.9 (51.)	518.0 (52.)	
Trefferlage	1.64 mm rechts, 1.96 mm tief			
Streuwert	5.97, horizontal: 6.99, vertikal: 4.74			

Meyton Elektronik