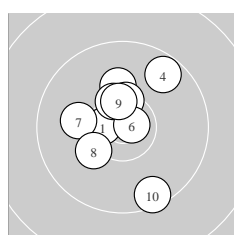
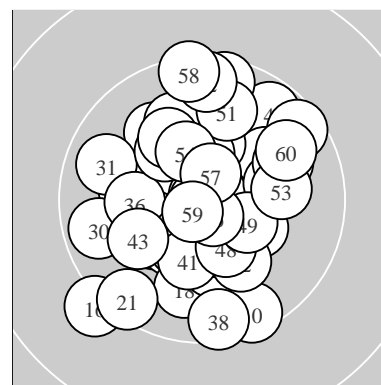
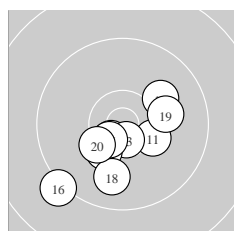


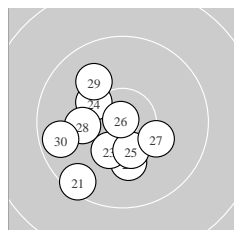
Ergebnis:	610.7	(585)
Serien:	102.4	102.0 101.8 101.0 102.6 100.9
Zähler:	45	15 0 0 0 0 0 0 0 0
Innenzehner:	26	
weiteste:	13.93 (16.)	, 11.91 (58.) , 11.49 (21.)
beste Teiler	22.0 (44.)	48.6 (26.) 140.0 (59.)
Trefferlage	0.44 mm links, 0.34 mm hoch	
Streuwert	4.90, horizontal: 4.35, vertikal: 5.38	



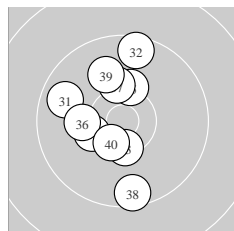
Serie 1:	10.6 *	10.2 ↑	10.4 *	9.7 ↗	10.4 *
	10.8 *	10.1 ←	10.2 ↙	10.5 *	9.5 ↓
beste Teiler	145.5 (6.) 303.2 (1.) 400.3 (9.)				
Trefferlage	0.42 mm links, 1.39 mm hoch				
Streuwert	4.68, horizontal: 3.92, vertikal: 5.34				



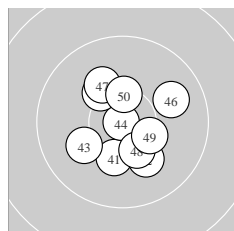
Serie 2:	10.3 *	10.6 *	10.6 *	10.3 *	10.6 *
	9.2 ↘	10.1 ↗	9.9 ↓	10.1 →	10.3 *
beste Teiler	246.4 (13.) 284.0 (12.) 314.9 (15.)				
Trefferlage	0.44 mm links, 2.89 mm tief				
Streuwert	4.56, horizontal: 5.05, vertikal: 4.01				



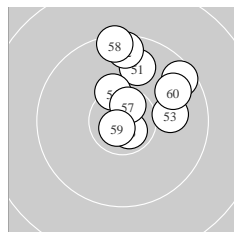
Serie 3:	9.5 ↘	10.2 ↓	10.4 *	10.3 ↖	10.4 *
	10.9 *	10.2 ↘	10.2 ←	10.0 ↖	9.7 ←
beste Teiler	48.6 (26.) 451.8 (25.) 480.4 (23.)				
Trefferlage	2.64 mm links, 2.00 mm tief				
Streuwert	4.48, horizontal: 4.46, vertikal: 4.49				



Serie 4:	9.8 ↖	9.6 ↑	10.4 *	10.3 *	10.3 *
	10.2 ←	10.3 ↑	9.6 ↓	10.0 ↗	10.5 *
beste Teiler	375.2 (40.) 410.8 (33.) 507.3 (34.)				
Trefferlage	1.97 mm links, 1.14 mm hoch				
Streuwert	5.25, horizontal: 3.63, vertikal: 6.47				



Serie 5:	10.2 ↓	10.1 ↘	10.1 ↙	10.9 *	10.2 ↖
	9.9 ↗	10.1 ↖	10.3 *	10.4 *	10.4 *
beste Teiler	22.0 (44.) 426.4 (50.) 466.4 (49.)				
Trefferlage	0.36 mm rechts, 0.32 mm tief				
Streuwert	4.27, horizontal: 4.05, vertikal: 4.47				



Serie 6:	9.9 ↑	9.6 ↑	10.0 →	10.4 *	9.6 ↗
	10.7 *	10.6 *	9.5 ↑	10.8 *	9.8 ↗
beste Teiler	140.0 (59.) 179.7 (56.) 254.8 (57.)				
Trefferlage	2.47 mm rechts, 4.73 mm hoch				
Streuwert	4.33, horizontal: 3.96, vertikal: 4.67				

Meyton Elektronik