

Ergebnis: **611.3** (586)

Serien: 100.9 101.1 102.7 101.0 104.3 101.3

Zähler: 46 14 0 0 0 0 0 0 0

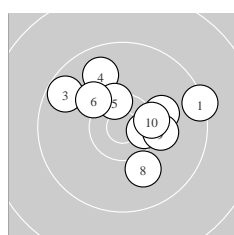
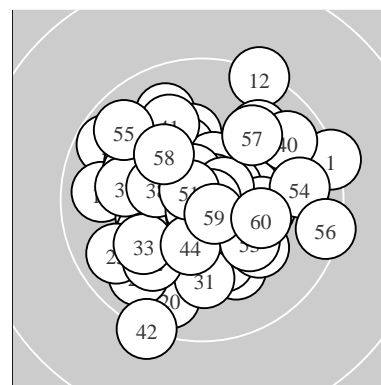
Innenzehner: 21

weiteste: 13.10 (42.), 12.64 (12.), 12.60 (1.)

beste Teiler 84.3 (50.) 116.2 (43.) 138.1 (35.)

Trefferlage 0.24 mm links, 0.30 mm hoch

Streuwert 4.85, horizontal: 5.00, vertikal: 4.70



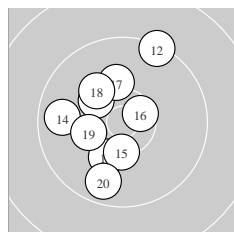
Serie 1:

9.4 →	10.2 →	9.7 ↖	9.9 ↗	10.4 *
10.2 ↖	10.5 *	10.0 ↘	10.2 →	10.4 *

beste Teiler 341.1 (7.) 420.9 (5.) 463.7 (10.)

Trefferlage 1.69 mm rechts, 2.06 mm hoch

Streuwert 5.21, horizontal: 6.17, vertikal: 4.04



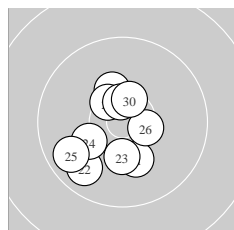
Serie 2:

10.2 ↙	9.4 ↗	10.3 ↖	9.8 ←	10.4 *
10.6 *	10.2 ↑	10.2 ↖	10.3 ←	9.7 ↙

beste Teiler 306.8 (16.) 466.3 (15.) 532.7 (13.)

Trefferlage 2.13 mm links, 0.71 mm hoch

Streuwert 5.25, horizontal: 4.16, vertikal: 6.15



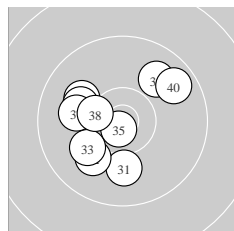
Serie 3:

10.2 ↘	9.8 ↙	10.3 ↓	10.2 ↙	9.8 ↙
10.5 *	10.3 *	10.5 *	10.6 *	10.5 *

beste Teiler 315.5 (29.) 369.5 (30.) 369.8 (26.)

Trefferlage 1.67 mm links, 1.23 mm tief

Streuwert 4.17, horizontal: 3.72, vertikal: 4.58



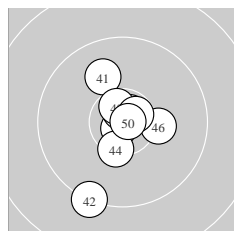
Serie 4:

10.0 ↓	10.0 ↙	10.1 ↙	10.0 ↖	10.8 *
10.1 ↖	10.0 ←	10.4 *	9.9 ↗	9.7 ↗

beste Teiler 138.1 (35.) 443.2 (38.) 684.0 (33.)

Trefferlage 2.15 mm links, 0.21 mm hoch

Streuwert 4.98, horizontal: 5.25, vertikal: 4.69



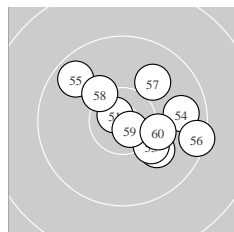
Serie 5:

10.0 ↖	9.3 ↙	10.8 *	10.4 *	10.7 *
10.3 →	10.7 *	10.6 *	10.7 *	10.8 *

beste Teiler 84.3 (50.) 116.2 (43.) 162.1 (47.)

Trefferlage 0.16 mm links, 0.40 mm tief

Streuwert 4.08, horizontal: 2.89, vertikal: 4.99



Serie 6:

10.8 *	10.1 ↖	10.2 ↖	9.8 →	9.7 ↖
9.5 →	10.0 ↗	10.3 ↖	10.7 *	10.2 →

beste Teiler 151.0 (51.) 173.5 (59.) 555.1 (58.)

Trefferlage 2.97 mm rechts, 0.48 mm hoch

Streuwert 4.95, horizontal: 5.74, vertikal: 3.99

Meyton Elektronik