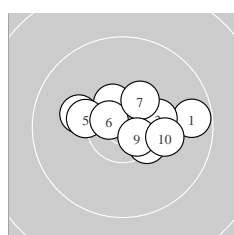
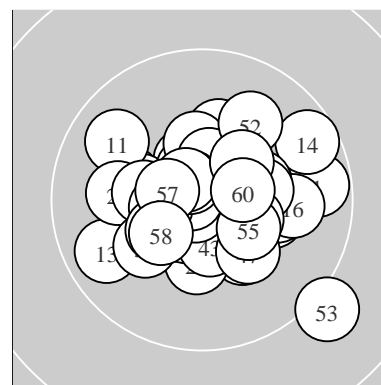
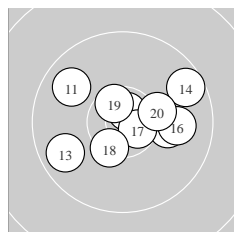


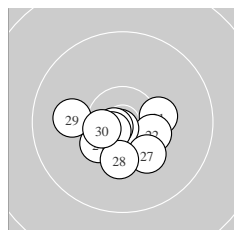
Ergebnis:	623.0	(595)
Serien:	103.2	101.9 104.5 105.7 104.5 103.2
Zähler:	55	5 0 0 0 0 0 0 0 0
Innenzehner:	42	
weiteste:	14.57 (53.)	, 10.52 (14.) , 10.18 (1.)
beste Teiler	48.1 (33.)	89.3 (39.) 95.7 (46.)
Trefferlage	0.53 mm rechts, 0.13 mm tief	
Streuwert	3.75, horizontal: 4.30, vertikal: 3.11	



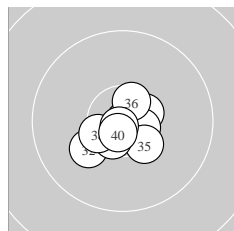
Serie 1:	9.7 →	10.5 *	10.3 →	10.1 ↖	10.3 ↖
	10.7 *	10.4 *	10.4 *	10.6 *	10.2 →
beste Teiler	223.6 (6.) 254.6 (9.) 379.2 (2.)				
Trefferlage	1.44 mm rechts, 0.88 mm hoch				
Streuwert	3.98, horizontal: 5.22, vertikal: 2.11				



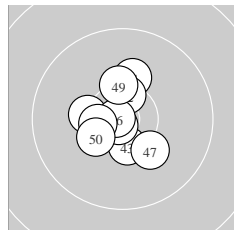
Serie 2:	9.8 ↖	10.1 →	9.8 ↙	9.6 ↗	10.7 *
	10.0 →	10.6 *	10.4 *	10.6 *	10.3 *
beste Teiler	167.6 (15.) 241.1 (17.) 298.5 (19.)				
Trefferlage	1.26 mm rechts, 0.52 mm hoch				
Streuwert	4.92, horizontal: 6.12, vertikal: 3.30				



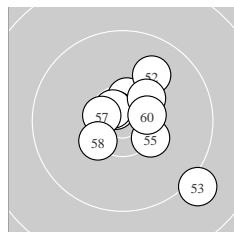
Serie 3:	10.3 *	10.4 *	10.8 *	10.4 *	10.8 *
	10.7 *	10.2 ↘	10.3 ↓	10.0 ←	10.6 *
beste Teiler	101.0 (23.) 145.4 (25.) 203.1 (26.)				
Trefferlage	0.44 mm links, 1.73 mm tief				
Streuwert	3.13, horizontal: 3.90, vertikal: 2.09				



Serie 4:	10.5 *	10.2 ↙	10.9 *	10.6 *	10.4 *
	10.6 *	10.6 *	10.4 *	10.8 *	10.7 *
beste Teiler	48.1 (33.) 89.3 (39.) 182.5 (40.)				
Trefferlage	0.03 mm links, 1.11 mm tief				
Streuwert	2.48, horizontal: 2.80, vertikal: 2.11				



Serie 5:	10.2 ↑	10.5 *	10.5 *	10.3 *	10.8 *
	10.8 *	10.2 ↘	10.5 *	10.3 *	10.4 *
beste Teiler	95.7 (46.) 109.4 (45.) 357.2 (42.)				
Trefferlage	0.79 mm links, 0.26 mm hoch				
Streuwert	3.22, horizontal: 2.77, vertikal: 3.61				



Serie 6:	10.5 *	10.0 ↗	9.1 ↘	10.7 *	10.4 *
	10.7 *	10.6 *	10.4 *	10.3 *	10.5 *
beste Teiler	186.9 (54.) 225.3 (56.) 315.5 (57.)				
Trefferlage	1.78 mm rechts, 0.35 mm hoch				
Streuwert	4.44, horizontal: 4.39, vertikal: 4.48				

Meyton Elektronik