

Ergebnis: **619.7** (593)

Serien: 103.1 101.8 104.8 103.5 103.1 103.4

Zähler: 53 7 0 0 0 0 0 0 0 0

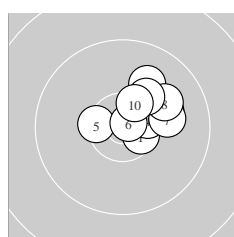
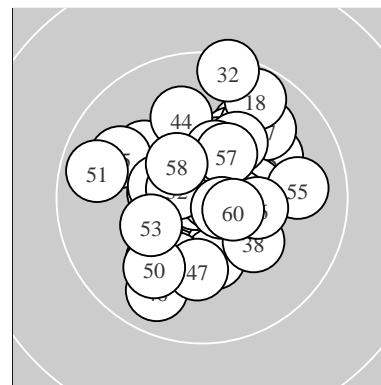
Innenzehner: 36

weiteste: 11.77 (32.) , 10.16 (18.) , 9.83 (51.)

beste Teiler 55.0 (33.) 57.0 (43.) 66.3 (31.)

Trefferlage 0.80 mm rechts, 0.51 mm hoch

Streuwert 3.93, horizontal: 3.76, vertikal: 4.10



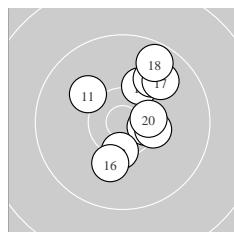
Serie 1:

10.6 *	10.0 ↗	10.1 ↗	10.5 *	10.4 *
10.8 *	10.1 →	10.0 ↗	10.2 ↗	10.4 *

beste Teiler 110.2 (6.) 303.4 (1.) 395.6 (4.)

Trefferlage 3.21 mm rechts, 2.31 mm hoch

Streuwert 2.80, horizontal: 3.22, vertikal: 2.32



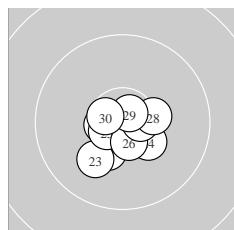
Serie 2:

10.1 ↘	10.5 *	10.4 *	10.2 ↗	10.0 ↗
10.1 ↓	9.9 ↗	9.7 ↗	10.4 *	10.5 *

beste Teiler 354.1 (12.) 395.3 (20.) 438.0 (13.)

Trefferlage 2.20 mm rechts, 1.95 mm hoch

Streuwert 4.37, horizontal: 3.55, vertikal: 5.06



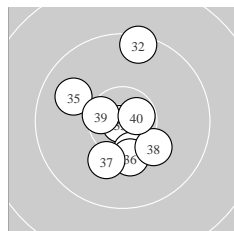
Serie 3:

10.6 *	10.3 *	10.1 ↙	10.3 *	10.6 *
10.6 *	10.6 *	10.4 *	10.7 *	10.6 *

beste Teiler 169.0 (29.) 269.2 (27.) 273.2 (25.)

Trefferlage 0.11 mm links, 1.48 mm tief

Streuwert 2.81, horizontal: 3.15, vertikal: 2.42



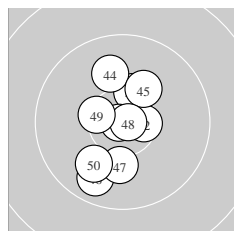
Serie 4:

10.9 *	9.5 ↑	10.9 *	10.4 *	9.9 ↘
10.3 ↓	10.2 ↓	10.2 ↘	10.5 *	10.7 *

beste Teiler 55.0 (33.) 66.3 (31.) 223.9 (40.)

Trefferlage 0.13 mm links, 0.37 mm tief

Streuwert 4.44, horizontal: 3.45, vertikal: 5.25



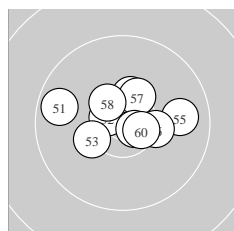
Serie 5:

10.4 *	10.5 *	10.9 *	10.0 ↑	10.2 ↗
9.8 ↙	10.1 ↓	10.8 *	10.4 *	10.0 ↙

beste Teiler 57.0 (43.) 85.0 (48.) 321.6 (42.)

Trefferlage 0.65 mm links, 0.35 mm tief

Streuwert 4.25, horizontal: 2.87, vertikal: 5.28



Serie 6:

9.7 ↖	10.6 *	10.3 *	10.4 *	9.9 →
10.3 *	10.4 *	10.5 *	10.7 *	10.6 *

beste Teiler 199.4 (59.) 243.9 (52.) 301.6 (60.)

Trefferlage 0.29 mm rechts, 1.01 mm hoch

Streuwert 4.01, horizontal: 5.16, vertikal: 2.34

Meyton Elektronik