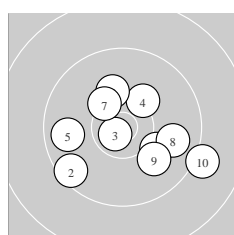
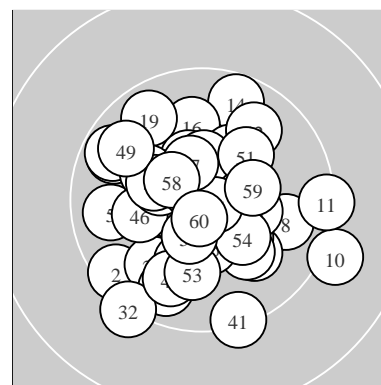
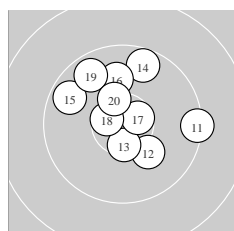


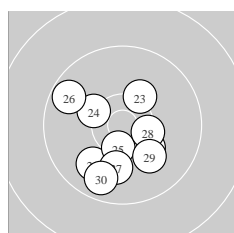
Ergebnis:	<b>611.4</b>	(584)
Serien:	99.9	100.8 101.3 103.6 101.2 104.6
Zähler:	44	16 0 0 0 0 0 0 0 0
Innenzehner:	26	
weiteste:	14.52 (10.)	, 13.23 (32.) , 12.55 (41.)
beste Teiler	70.8 (31.)	139.6 (55.) 150.2 (52.)
Trefferlage	0.15 mm links, 0.62 mm tief	
Streuwert	4.89, horizontal: 4.93, vertikal: 4.85	



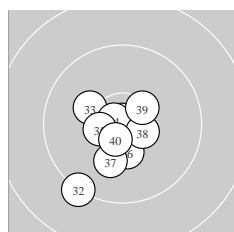
Serie 1:	10.1 ↘	9.5 ↙	10.7 *	10.3 ↗	9.8 ←
	10.2 ↑	10.3 *	9.9 →	10.0 ↘	9.1 →
beste Teiler	170.5 (3.) 497.0 (7.) 557.6 (4.)				
Trefferlage	1.23 mm rechts, 1.22 mm tief				
Streuwert	6.09, horizontal: 7.28, vertikal: 4.60				



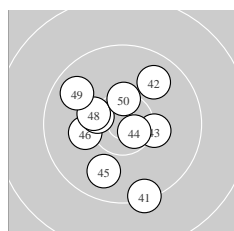
Serie 2:	9.4 →	10.2 ↘	10.5 *	9.7 ↑	9.7 ↖
	10.0 ↑	10.6 *	10.6 *	9.7 ↘	10.4 *
beste Teiler	274.3 (17.) 276.0 (18.) 348.8 (13.)				
Trefferlage	0.37 mm rechts, 2.76 mm hoch				
Streuwert	5.39, horizontal: 5.84, vertikal: 4.90				



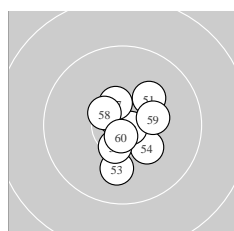
Serie 3:	9.9 ↙	10.2 ↘	10.3 ↗	10.3 ↖	10.5 *
	9.7 ↖	10.1 ↓	10.4 *	10.1 ↘	9.8 ↓
beste Teiler	384.0 (25.) 437.3 (28.) 538.0 (24.)				
Trefferlage	0.82 mm links, 2.44 mm tief				
Streuwert	4.83, horizontal: 4.73, vertikal: 4.92				



Serie 4:	10.9 *	9.3 ↙	10.2 ↖	10.7 *	10.5 *
	10.4 *	10.1 ↓	10.5 *	10.4 *	10.6 *
beste Teiler	70.8 (31.) 162.3 (34.) 283.6 (40.)				
Trefferlage	1.41 mm links, 1.96 mm tief				
Streuwert	3.92, horizontal: 3.49, vertikal: 4.30				



Serie 5:	9.4 ↓	9.9 ↗	10.3 →	10.7 *	9.9 ↓
	10.1 ←	10.4 *	10.3 *	9.8 ↖	10.4 *
beste Teiler	231.8 (44.) 419.3 (50.) 438.8 (47.)				
Trefferlage	0.98 mm links, 0.44 mm tief				
Streuwert	5.36, horizontal: 4.84, vertikal: 5.84				



Serie 6:	10.2 ↗	10.8 *	10.0 ↓	10.3 ↘	10.8 *
	10.5 *	10.5 *	10.5 *	10.3 *	10.7 *
beste Teiler	139.6 (55.) 150.2 (52.) 187.9 (60.)				
Trefferlage	0.70 mm rechts, 0.45 mm tief				
Streuwert	3.28, horizontal: 2.85, vertikal: 3.67				

Meyton Elektronik