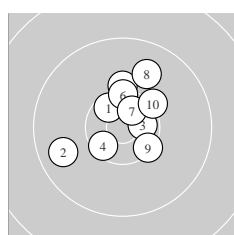
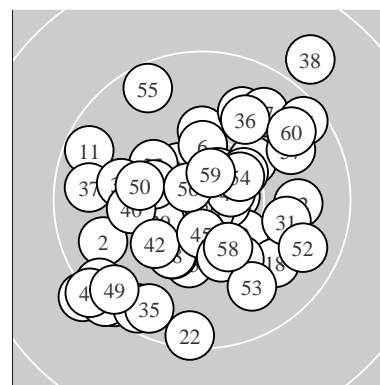
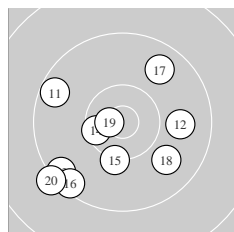


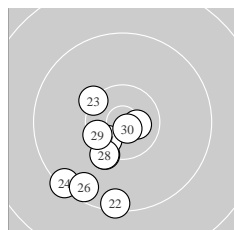
Ergebnis:	574	(603.2)					
Serien:	98	93	97	94	97	95	
Zähler:	35	24	1	0	0	0	0
Innenzehner:	20						
weiteste:	16.42 (38.) , 14.23 (20.) , 13.49 (41.)						
beste Teiler	124.4 (30.) 172.8 (56.) 205.0 (19.)						
Trefferlage	0.57 mm links, 0.78 mm tief						
Streuwert	5.72, horizontal: 5.79, vertikal: 5.66						



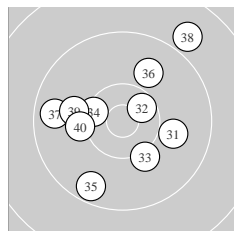
Serie 1:	10.5 *	9.7 ↙	10.6 *	10.4 *	10.1 ↑
	10.3 ↑	10.6 *	9.8 ↑	10.3 ↘	10.2 ↗
beste Teiler	293.7 (7.) 310.8 (3.) 371.2 (1.)				
Trefferlage	0.25 mm rechts, 1.93 mm hoch				
Streuwert	4.21, horizontal: 4.21, vertikal: 4.20				



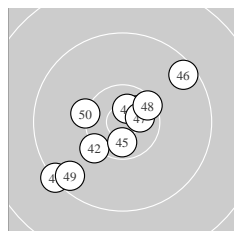
Serie 2:	9.5 ↖	9.8 →	9.4 ↙	10.4 *	10.2 ↓
	9.4 ↙	9.7 ↗	9.8 ↘	10.7 *	9.2 ↙
beste Teiler	205.0 (19.) 427.0 (14.) 597.1 (15.)				
Trefferlage	2.50 mm links, 2.66 mm tief				
Streuwert	6.75, horizontal: 7.49, vertikal: 5.91				



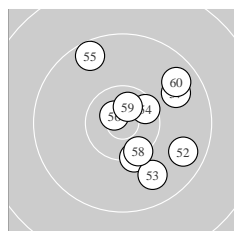
Serie 3:	10.7 *	9.4 ↓	10.3 ↖	9.3 ↙	10.2 ↙
	9.5 ↙	10.5 *	10.2 ↙	10.4 *	10.8 *
beste Teiler	124.4 (30.) 224.2 (21.) 361.8 (27.)				
Trefferlage	2.93 mm links, 4.48 mm tief				
Streuwert	4.17, horizontal: 3.21, vertikal: 4.95				



Serie 4:	9.9 →	10.5 *	10.1 ↘	10.4 *	9.6 ↙
	9.9 ↗	9.6 ←	8.9 ↗	10.0 ←	10.1 ←
beste Teiler	359.7 (32.) 469.3 (34.) 649.7 (33.)				
Trefferlage	0.56 mm links, 0.82 mm hoch				
Streuwert	6.71, horizontal: 7.06, vertikal: 6.35				



Serie 5:	9.3 ↙	10.2 ↙	10.6 *	10.7 *	10.6 *
	9.5 ↗	10.6 *	10.4 *	9.5 ↙	10.2 ←
beste Teiler	216.3 (44.) 276.2 (47.) 313.0 (45.)				
Trefferlage	0.95 mm links, 0.82 mm tief				
Streuwert	5.61, horizontal: 6.10, vertikal: 5.08				



Serie 6:	10.3 ↓	9.7 →	9.8 ↘	10.4 *	9.5 ↖
	10.7 *	9.8 ↗	10.3 ↘	10.6 *	9.6 ↗
beste Teiler	172.8 (56.) 262.4 (59.) 411.6 (54.)				
Trefferlage	3.26 mm rechts, 0.50 mm hoch				
Streuwert	5.25, horizontal: 4.56, vertikal: 5.87				

Meyton Elektronik