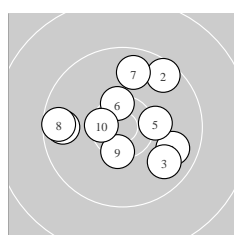
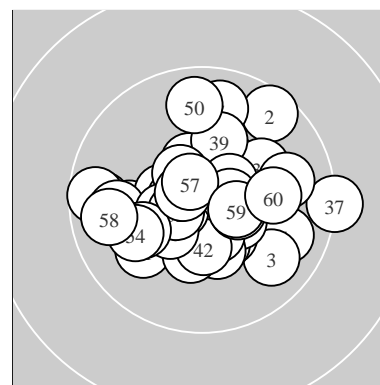
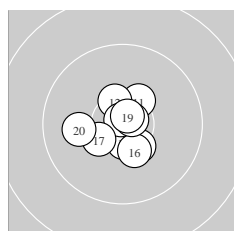


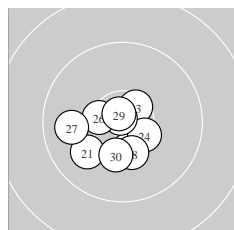
Ergebnis:	<b>619.0</b>	(589)
Serien:	99.9	105.0 104.0 102.6 104.5 103.0
Zähler:	49	11 0 0 0 0 0 0 0 0
Innenzehner:	38	
weiteste:	13.17 (37.)	, 10.88 (2.) , 10.59 (8.)
beste Teiler	73.5 (25.)	77.4 (14.) 117.0 (36.)
Trefferlage	0.09 mm links, 0.26 mm tief	
Streuwert	4.15, horizontal: 4.78, vertikal: 3.41	



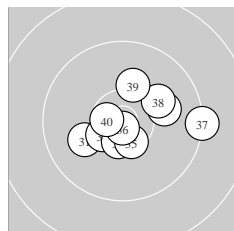
Serie 1:	9.8 ↘	9.6 ↗	9.8 ↘	9.7 ←	10.3 →
	10.4 *	9.8 ↑	9.6 ←	10.4 *	10.5 *
beste Teiler	353.4 (10.) 401.5 (6.) 412.4 (9.)				
Trefferlage	0.34 mm rechts, 0.97 mm hoch				
Streuwert	5.96, horizontal: 6.80, vertikal: 4.98				



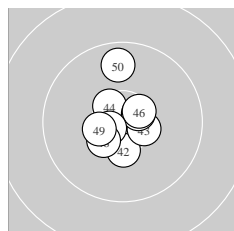
Serie 2:	10.4 *	10.4 *	10.6 *	10.9 *	10.4 *
	10.4 *	10.4 *	10.7 *	10.8 *	10.0 ←
beste Teiler	77.4 (14.) 155.5 (19.) 168.6 (18.)				
Trefferlage	0.29 mm links, 0.39 mm tief				
Streuwert	3.07, horizontal: 3.15, vertikal: 2.98				



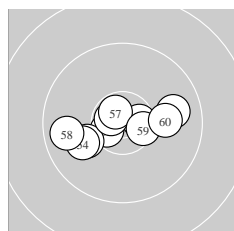
Serie 3:	10.0 ↙	10.4 *	10.5 *	10.4 *	10.9 *
	10.5 *	9.9 ←	10.3 *	10.8 *	10.3 ↓
beste Teiler	73.5 (25.) 149.9 (29.) 332.5 (23.)				
Trefferlage	1.21 mm links, 1.77 mm tief				
Streuwert	3.44, horizontal: 3.78, vertikal: 3.05				



Serie 4:	10.1 ←	10.4 *	10.1 →	10.5 *	10.5 *
	10.8 *	9.3 →	10.1 ↗	10.2 ↑	10.6 *
beste Teiler	117.0 (36.) 263.0 (40.) 350.2 (34.)				
Trefferlage	1.61 mm rechts, 0.23 mm tief				
Streuwert	4.61, horizontal: 5.70, vertikal: 3.15				



Serie 5:	10.7 *	10.4 *	10.5 *	10.5 *	10.6 *
	10.5 *	10.7 *	10.4 *	10.4 *	9.8 ↑
beste Teiler	164.5 (41.) 237.1 (47.) 293.8 (45.)				
Trefferlage	0.43 mm links, 0.31 mm hoch				
Streuwert	3.31, horizontal: 2.61, vertikal: 3.88				



Serie 6:	9.9 →	10.6 *	10.1 ↙	10.0 ←	10.6 *
	10.7 *	10.7 *	9.8 ←	10.5 *	10.1 →
beste Teiler	202.4 (56.) 215.7 (57.) 277.6 (55.)				
Trefferlage	0.58 mm links, 0.49 mm tief				
Streuwert	4.35, horizontal: 5.88, vertikal: 1.83				

Meyton Elektronik