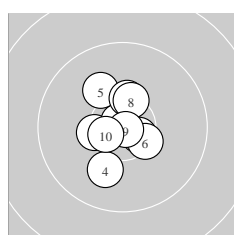
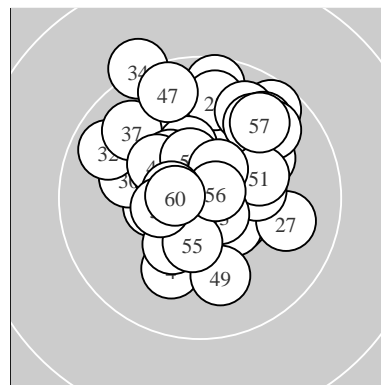
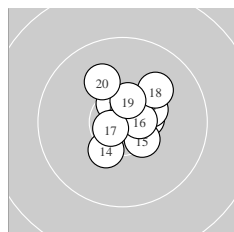


Ergebnis: **617.1** (587)
 Serien: 104.7 104.2 101.5 100.2 101.4 105.1
 Zähler: 47 13 0 0 0 0 0 0 0
 Innenzehner: 35
 weiteste: 13.39 (34.) , 10.65 (24.) , 10.58 (36.)
 beste Teiler 59.2 (9.) 107.6 (2.) 108.9 (52.)
 Trefferlage 0.33 mm rechts, 2.55 mm hoch
 Streuwert 3.92, horizontal: 3.77, vertikal: 4.06



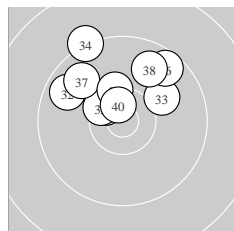
Serie 1:
 10.4 * 10.8 * 10.6 * 10.1 ↓ 10.1 ↖
 10.4 * 10.4 * 10.4 * 10.9 * 10.6 *
 beste Teiler 59.2 (9.) 107.6 (2.) 282.1 (3.)
 Trefferlage 0.52 mm links, 0.29 mm hoch
 Streuwert 3.22, horizontal: 2.67, vertikal: 3.69



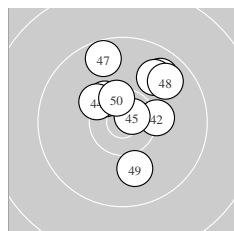
Serie 2:
 10.6 * 10.5 * 10.4 * 10.3 * 10.4 *
 10.6 * 10.7 * 10.1 ↗ 10.5 * 10.1 ↖
 beste Teiler 210.6 (17.) 261.9 (16.) 320.3 (11.)
 Trefferlage 1.06 mm rechts, 1.22 mm hoch
 Streuwert 3.22, horizontal: 3.09, vertikal: 3.34



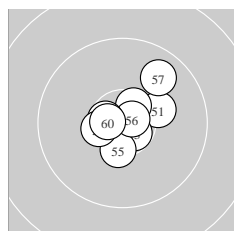
Serie 3:
 10.2 ↑ 10.7 * 10.4 * 9.6 ↑ 10.2 ↗
 10.2 ↖ 9.9 → 9.8 ↑ 10.4 * 10.1 ↖
 beste Teiler 211.5 (22.) 413.3 (29.) 470.9 (23.)
 Trefferlage 0.38 mm rechts, 4.27 mm hoch
 Streuwert 3.96, horizontal: 3.97, vertikal: 3.96



Serie 4:
 10.5 * 9.7 ↖ 10.1 ↗ 9.3 ↖ 10.5 *
 9.6 ↗ 9.8 ↖ 9.8 ↑ 10.3 * 10.6 *
 beste Teiler 260.0 (40.) 342.4 (31.) 398.9 (35.)
 Trefferlage 1.17 mm links, 5.45 mm hoch
 Streuwert 4.40, horizontal: 5.31, vertikal: 3.24



Serie 5:
 9.8 ↗ 10.3 → 10.4 * 10.3 * 10.7 *
 9.9 ↗ 9.7 ↖ 9.8 ↗ 10.0 ↓ 10.5 *
 beste Teiler 172.1 (45.) 383.6 (50.) 453.4 (43.)
 Trefferlage 1.54 mm rechts, 3.50 mm hoch
 Streuwert 4.42, horizontal: 4.05, vertikal: 4.77



Serie 6:
 10.2 → 10.8 * 10.7 * 10.6 * 10.4 *
 10.8 * 9.8 ↗ 10.6 * 10.5 * 10.7 *
 beste Teiler 108.9 (52.) 158.6 (56.) 234.8 (60.)
 Trefferlage 0.73 mm rechts, 0.58 mm hoch
 Streuwert 3.09, horizontal: 3.20, vertikal: 2.97

Meyton Elektronik