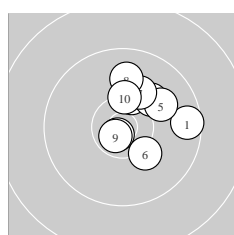
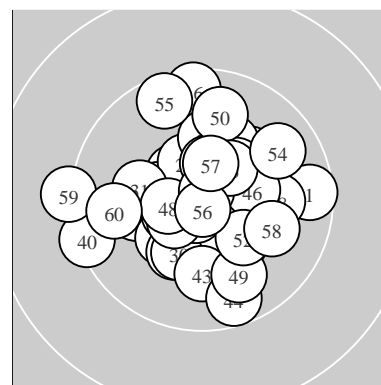
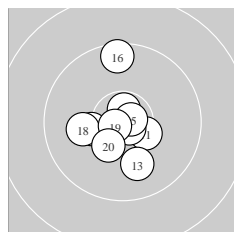


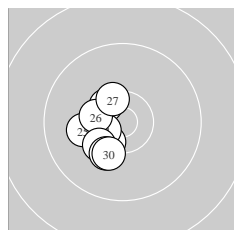
Ergebnis:	615.8	(589)
Serien:	102.0	103.9 103.4 103.1 102.2 101.2
Zähler:	49	11 0 0 0 0 0 0 0 0
Innenzehner:	32	
weiteste:	13.46 (59.)	, 12.25 (40.) , 11.09 (16.)
beste Teiler	93.1 (56.)	101.9 (51.) 143.5 (19.)
Trefferlage	0.27 mm links, 0.19 mm hoch	
Streuwert	4.42, horizontal: 4.54, vertikal: 4.30	



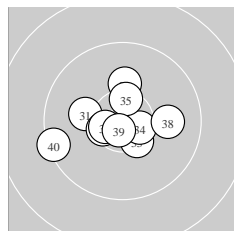
Serie 1:	9.6 →	10.8 *	10.3 *	10.1 ↗	10.0 ↘
	10.2 ↘	10.1 ↗	9.9 ↑	10.7 *	10.3 *
beste Teiler	149.7 (2.) 191.1 (9.) 503.0 (10.)				
Trefferlage	2.91 mm rechts, 2.59 mm hoch				
Streuwert	3.84, horizontal: 3.72, vertikal: 3.96				



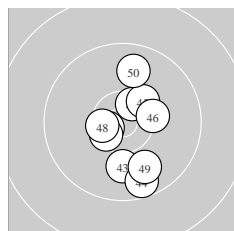
Serie 2:	10.4 *	10.8 *	10.0 ↓	10.7 *	10.8 *
	9.6 ↑	10.3 ←	10.1 ←	10.8 *	10.4 *
beste Teiler	143.5 (19.) 147.3 (15.) 152.7 (12.)				
Trefferlage	0.74 mm links, 0.32 mm tief				
Streuwert	4.06, horizontal: 3.31, vertikal: 4.69				



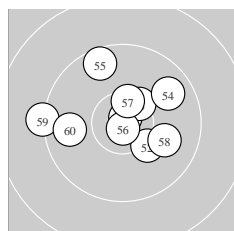
Serie 3:	10.5 *	10.4 *	10.4 *	10.5 *	10.1 ←
	10.4 *	10.4 *	10.3 ↗	10.2 ↘	10.2 ↘
beste Teiler	333.0 (24.) 396.0 (21.) 403.8 (23.)				
Trefferlage	3.43 mm links, 1.17 mm tief				
Streuwert	2.52, horizontal: 1.45, vertikal: 3.26				



Serie 4:	10.2 ←	10.2 ↑	10.4 *	10.6 *	10.5 *
	10.5 *	10.6 *	10.0 →	10.7 *	9.4 ←
beste Teiler	167.3 (39.) 308.0 (37.) 308.2 (34.)				
Trefferlage	1.09 mm links, 0.12 mm tief				
Streuwert	4.36, horizontal: 5.31, vertikal: 3.13				



Serie 5:	10.6 *	10.5 *	10.0 ↓	9.7 ↓	10.3 *
	10.3 *	10.5 *	10.5 *	9.9 ↓	9.9 ↑
beste Teiler	270.3 (41.) 339.5 (42.) 347.5 (48.)				
Trefferlage	1.01 mm rechts, 1.24 mm tief				
Streuwert	4.59, horizontal: 3.04, vertikal: 5.74				



Serie 6:	10.8 *	10.2 ↘	10.4 *	9.8 ↗	9.6 ↖
	10.8 *	10.5 *	10.0 ↘	9.3 ←	9.8 ←
beste Teiler	93.1 (56.) 101.9 (51.) 378.1 (57.)				
Trefferlage	0.30 mm links, 1.45 mm hoch				
Streuwert	5.58, horizontal: 6.73, vertikal: 4.12				

Meyton Elektronik