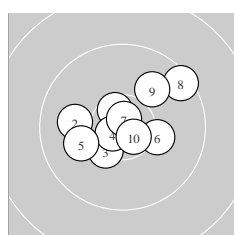
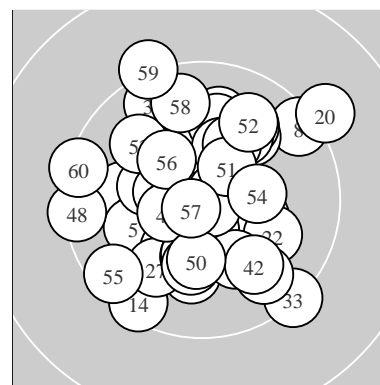
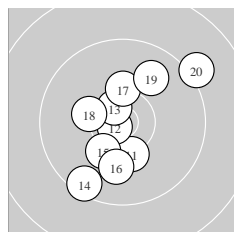


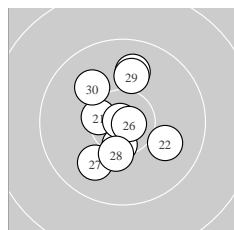
Ergebnis:	<b>611.0</b>	(585)
Serien:	103.0	101.3 102.9 101.6 102.4 99.8
Zähler:	45	15 0 0 0 0 0 0 0 0
Innenzehner:	24	
weiteste:	14.39 (20.)	, 13.47 (59.) , 12.77 (33.)
beste Teiler	45.1 (24.)	105.3 (26.) 114.0 (45.)
Trefferlage	0.33 mm links, 0.23 mm hoch	
Streuwert	5.03, horizontal: 4.71, vertikal: 5.32	



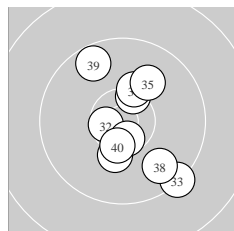
Serie 1:	10.6 *	10.0 ←	10.4 *	10.7 *	10.1 ←
	10.2 →	10.8 *	9.5 ↗	10.0 ↗	10.7 *
beste Teiler	133.8 (7.) 187.8 (4.) 232.5 (10.)				
Trefferlage	0.17 mm rechts, 0.75 mm hoch				
Streuwert	4.53, horizontal: 5.31, vertikal: 3.59				



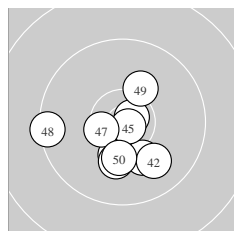
Serie 2:	10.3 *	10.8 *	10.6 *	9.5 ↘	10.3 ↘
	10.1 ↓	10.3 ↑	10.3 ←	9.9 ↗	9.2 ↗
beste Teiler	146.1 (12.) 266.9 (13.) 528.7 (11.)				
Trefferlage	0.03 mm links, 0.30 mm tief				
Streuwert	5.71, horizontal: 5.17, vertikal: 6.20				



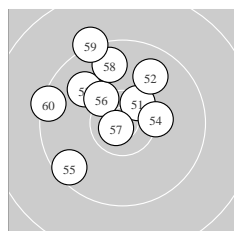
Serie 3:	10.5 *	10.0 →	10.5 *	10.9 *	9.9 ↑
	10.8 *	10.0 ↙	10.3 *	10.0 ↑	10.0 ↘
beste Teiler	45.1 (24.) 105.3 (26.) 361.0 (23.)				
Trefferlage	0.41 mm links, 0.31 mm hoch				
Streuwert	4.39, horizontal: 3.47, vertikal: 5.16				



Serie 4:	10.4 *	10.6 *	9.4 ↘	10.3 ↑	10.0 ↗
	10.3 ↓	10.6 *	9.8 ↘	9.7 ↘	10.5 *
beste Teiler	272.8 (32.) 289.3 (37.) 397.7 (40.)				
Trefferlage	1.34 mm rechts, 0.48 mm tief				
Streuwert	5.26, horizontal: 4.03, vertikal: 6.24				



Serie 5:	10.1 ↘	10.0 ↘	10.7 *	10.3 ↓	10.8 *
	10.2 ↓	10.5 *	9.4 ←	10.2 ↗	10.2 ↓
beste Teiler	114.0 (45.) 165.0 (43.) 359.2 (47.)				
Trefferlage	0.47 mm links, 2.60 mm tief				
Streuwert	4.31, horizontal: 4.72, vertikal: 3.86				



Serie 6:	10.5 *	9.9 ↗	9.9 ↘	10.3 *	9.6 ↙
	10.3 *	10.8 *	9.8 ↑	9.3 ↑	9.4 ←
beste Teiler	132.0 (57.) 397.0 (51.) 513.7 (56.)				
Trefferlage	2.58 mm links, 3.73 mm hoch				
Streuwert	5.52, horizontal: 5.55, vertikal: 5.48				

Meyton Elektronik